



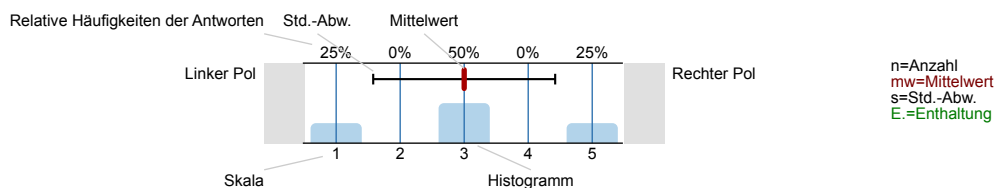
# SPL012-FB3-W18

Erfasste Fragebögen = 95

## Auswertungsteil der geschlossenen Fragen

### Legende

Frage**text**

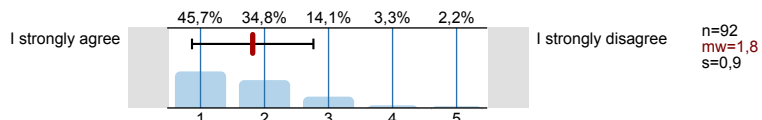


### 1. University wide section

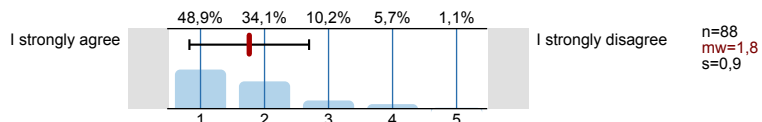
1.1) Gender:



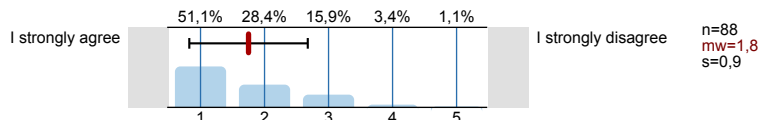
1.2) The course content is very interesting.



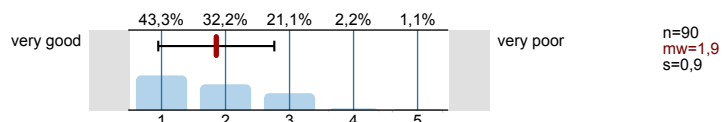
1.3) This particular course contributes to reaching the objectives of the academic programme.



1.4) The lecturer is very motivating.

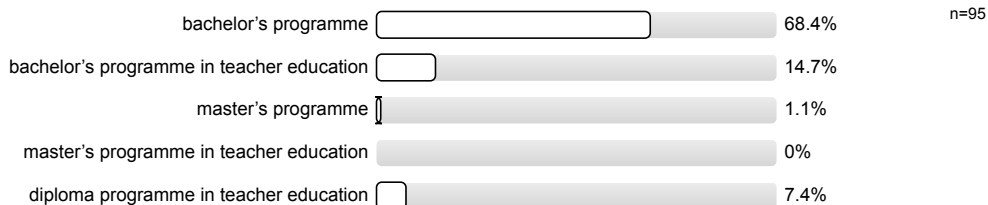


1.5) Overall, I would rate the course as

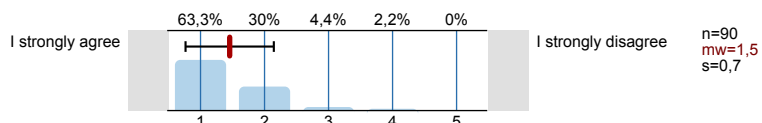


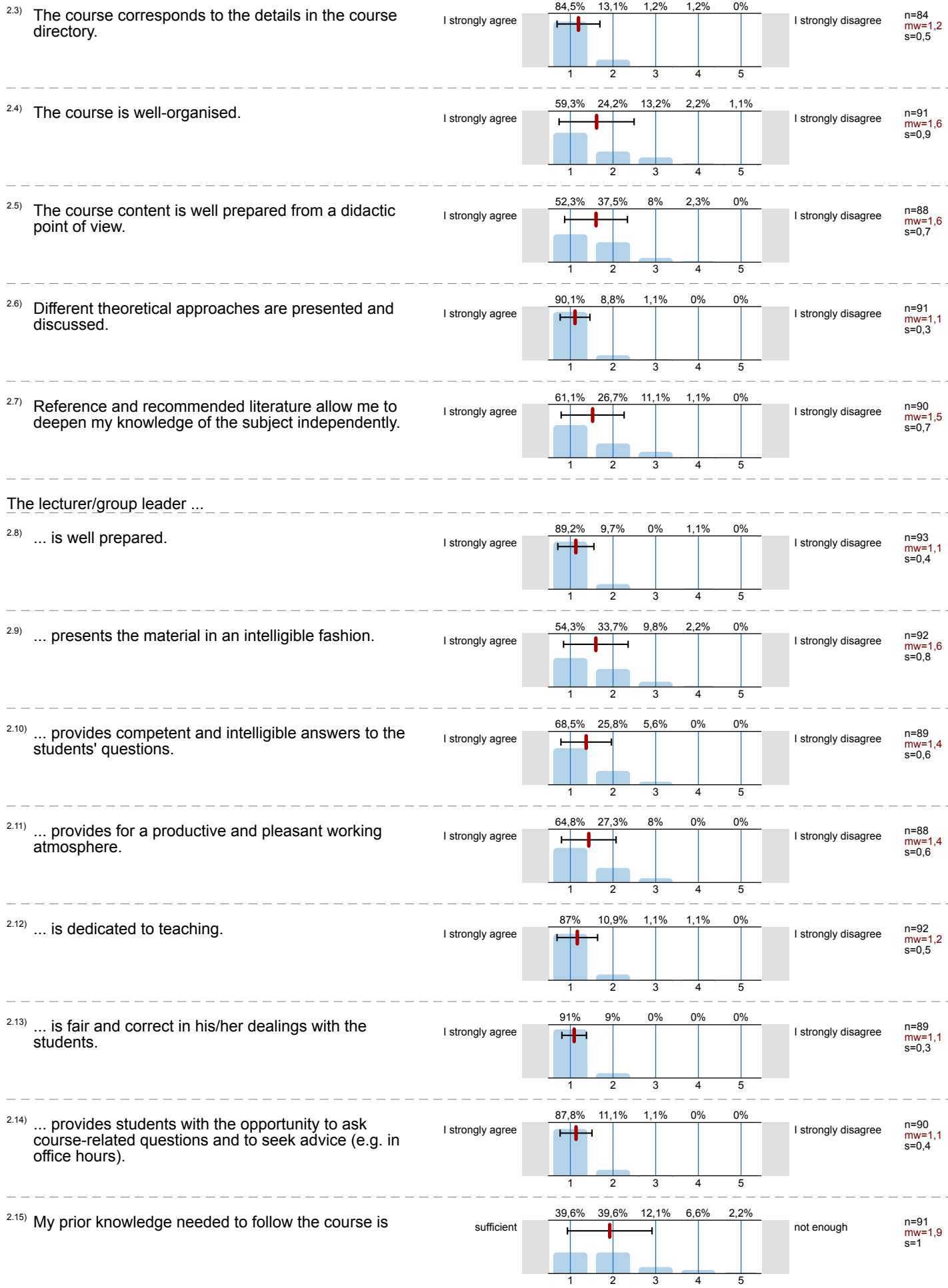
### 2. Study-related questions

2.1) I am studying in the:

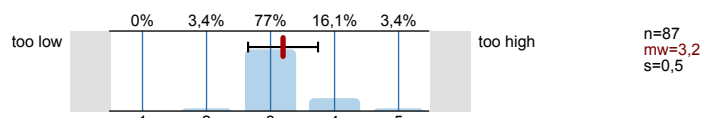


2.2) The objectives, content, methods and assessment criteria were made available in a suitable format.

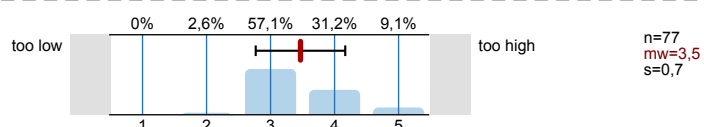




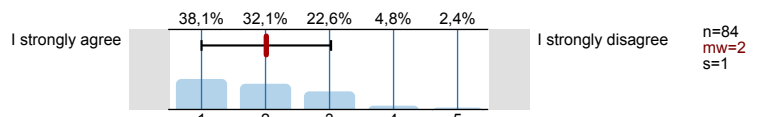
2.16) I find the requirements of the course to be



2.17) Only for lectures: The presentation speed is

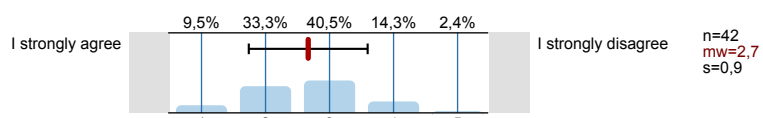


2.18) I learned a lot by attending the course.

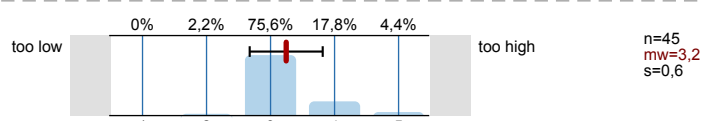


The following 5 questions only apply to courses with continuous assessment:

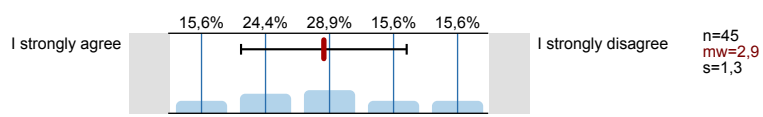
2.19) I have spent sufficient time on preparing for the class and on revising.



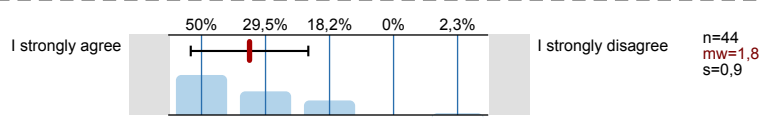
2.20) With regard to the specifications of the curriculum (ECTS credits), the total workload is



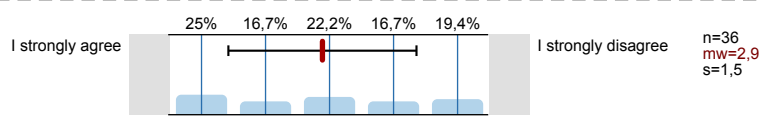
2.21) I actively contribute to the course.



2.22) The type of assessment used (e.g. exam, presentation, essay, etc.) is appropriate.



2.23) I have received feedback on my performance during the semester.

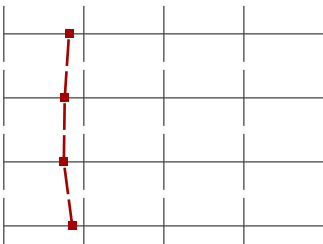
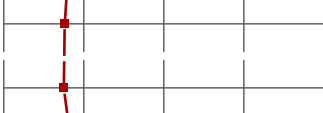




# Profillinie

Zusammenstellung: SPL012-FB3-W18

Verwendete Werte in der Profillinie: Mittelwert

## 1. University wide section

1.2)	The course content is very interesting.	I strongly agree		I strongly disagree	n=92	mw=1,8	md=2,0	s=0,9
1.3)	This particular course contributes to reaching the objectives of the academic programme.	I strongly agree		I strongly disagree	n=88	mw=1,8	md=2,0	s=0,9
1.4)	The lecturer is very motivating.	I strongly agree		I strongly disagree	n=88	mw=1,8	md=1,0	s=0,9
1.5)	Overall, I would rate the course as	very good		very poor	n=90	mw=1,9	md=2,0	s=0,9

## 2. Study-related questions

2.2)	The objectives, content, methods and assessment criteria were made available in a suitable format.	I strongly agree		I strongly disagree	n=90	mw=1,5	md=1,0	s=0,7
2.3)	The course corresponds to the details in the course directory.	I strongly agree		I strongly disagree	n=84	mw=1,2	md=1,0	s=0,5
2.4)	The course is well-organised.	I strongly agree		I strongly disagree	n=91	mw=1,6	md=1,0	s=0,9
2.5)	The course content is well prepared from a didactic point of view.	I strongly agree		I strongly disagree	n=88	mw=1,6	md=1,0	s=0,7
2.6)	Different theoretical approaches are presented and discussed.	I strongly agree		I strongly disagree	n=91	mw=1,1	md=1,0	s=0,3
2.7)	Reference and recommended literature allow me to deepen my knowledge of the subject independently.	I strongly agree		I strongly disagree	n=90	mw=1,5	md=1,0	s=0,7
2.8)	... is well prepared.	I strongly agree		I strongly disagree	n=93	mw=1,1	md=1,0	s=0,4
2.9)	... presents the material in an intelligible fashion.	I strongly agree		I strongly disagree	n=92	mw=1,6	md=1,0	s=0,8
2.10)	... provides competent and intelligible answers to the students' questions.	I strongly agree		I strongly disagree	n=89	mw=1,4	md=1,0	s=0,6
2.11)	... provides for a productive and pleasant working atmosphere.	I strongly agree		I strongly disagree	n=88	mw=1,4	md=1,0	s=0,6
2.12)	... is dedicated to teaching.	I strongly agree		I strongly disagree	n=92	mw=1,2	md=1,0	s=0,5
2.13)	... is fair and correct in his/her dealings with the students.	I strongly agree		I strongly disagree	n=89	mw=1,1	md=1,0	s=0,3
2.14)	... provides students with the opportunity to ask course-related questions and to seek advice (e.g. in office hours).	I strongly agree		I strongly disagree	n=90	mw=1,1	md=1,0	s=0,4
2.15)	My prior knowledge needed to follow the course is	sufficient		not enough	n=91	mw=1,9	md=2,0	s=1,0
2.16)	I find the requirements of the course to be	too low		too high	n=87	mw=3,2	md=3,0	s=0,5
2.17)	<u>Only for lectures:</u> The presentation speed is	too low		too high	n=77	mw=3,5	md=3,0	s=0,7
2.18)	I learned a lot by attending the course.	I strongly agree		I strongly disagree	n=84	mw=2,0	md=2,0	s=1,0
2.19)	I have spent sufficient time on preparing for the class and on revising.	I strongly agree		I strongly disagree	n=42	mw=2,7	md=3,0	s=0,9

