



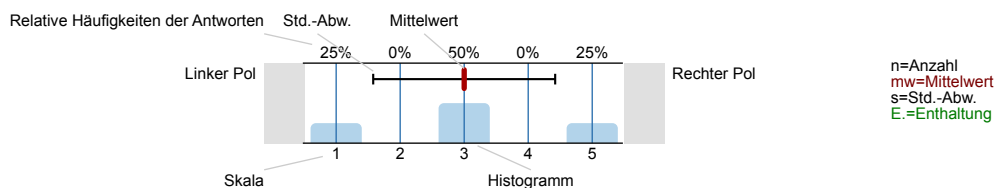
SPL018-FB3-17W

Erfasste Fragebögen = 119

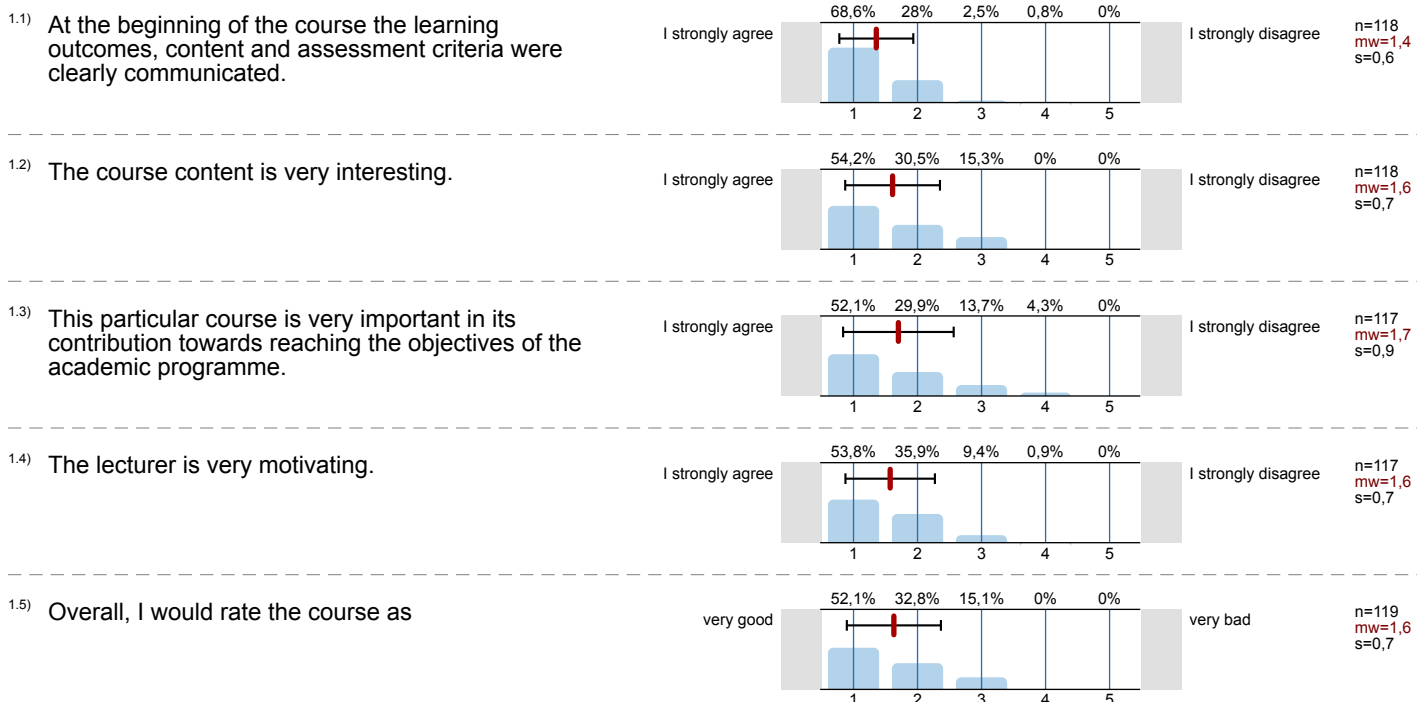
Auswertungsteil der geschlossenen Fragen

Legende

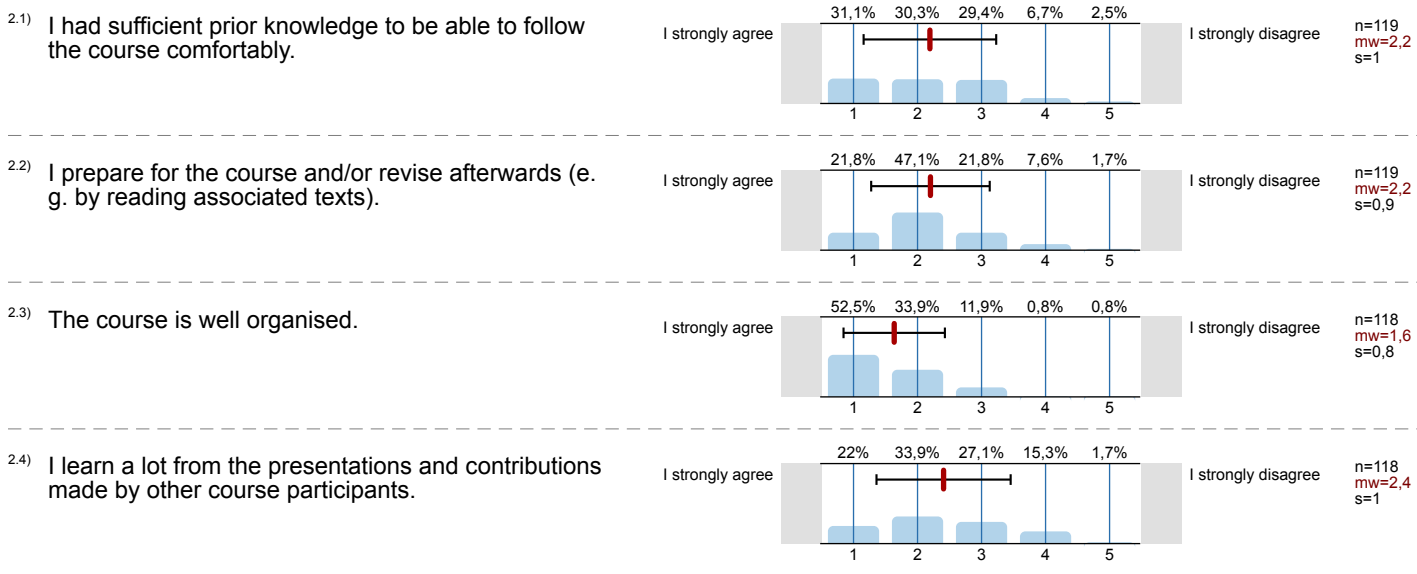
Frage-
text



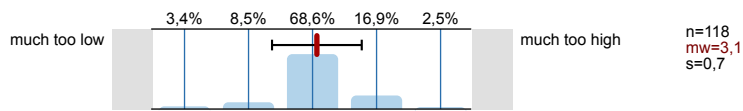
1. University-wide section



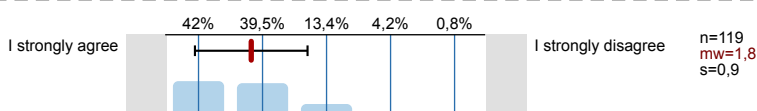
2. Questions from the directorate of studies



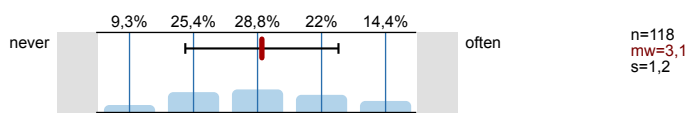
2.5) I do a large amount of work in comparison with other courses.



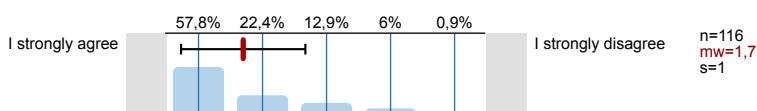
2.6) Debates are well managed (contributions are encouraged and responded to, talkative students are stopped).



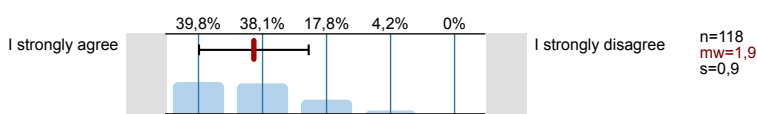
2.7) I contribute to discussions.



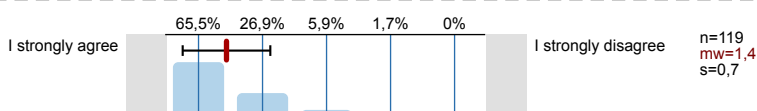
2.8) There are adequate opportunities for debates.



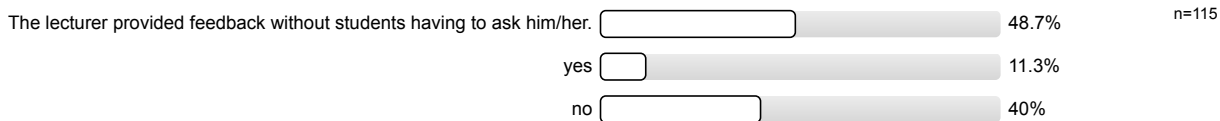
2.9) I received enough assistance (oral explanations or written instructions) when working on my partial achievements.



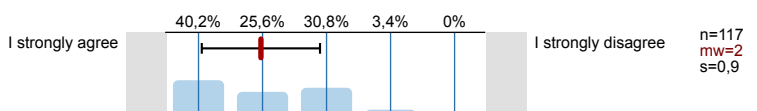
2.10) The lecturer provides helpful feedback on the students' contributions and questions.



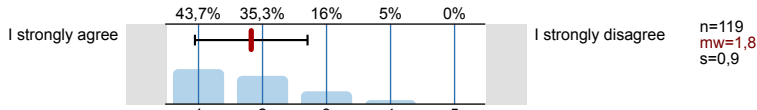
2.11) Did you actively request feedback on the individual partial achievements?



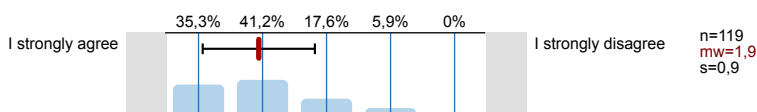
2.12) The feedback from the lecturer on my contributions was constructive and helpful.



2.13) The course stimulates my interest in my studies.

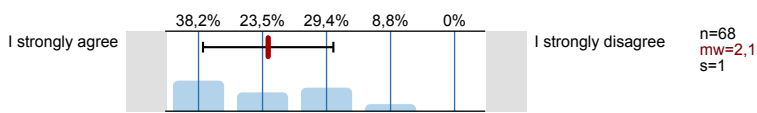


2.14) The course motivates me to follow up on the course contents.

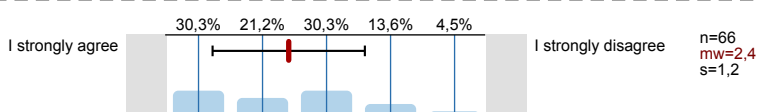


The following three questions refer to master's and doctoral seminars only:

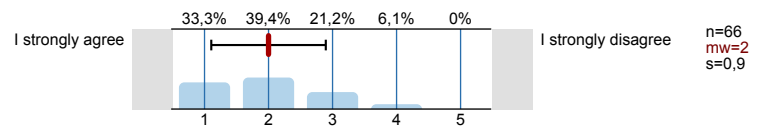
2.15) The course helps me to carry out my own research.



2.16) The debates yield important points for my research.



2.17) The lecturer encourages a more in-depth examination of the research among all course participants.



Profillinie

Zusammenstellung: SPL018-FB3-17W

Verwendete Werte in der Profillinie: Mittelwert

1. University-wide section

1.1) At the beginning of the course the learning outcomes, content and assessment criteria were clearly communicated.	I strongly agree		I strongly disagree	n=118	mw=1,4	md=1,0	s=0,6
1.2) The course content is very interesting.	I strongly agree		I strongly disagree	n=118	mw=1,6	md=1,0	s=0,7
1.3) This particular course is very important in its contribution towards reaching the objectives of the academic programme.	I strongly agree		I strongly disagree	n=117	mw=1,7	md=1,0	s=0,9
1.4) The lecturer is very motivating.	I strongly agree		I strongly disagree	n=117	mw=1,6	md=1,0	s=0,7
1.5) Overall, I would rate the course as	very good		very bad	n=119	mw=1,6	md=1,0	s=0,7

2. Questions from the directorate of studies

2.1) I had sufficient prior knowledge to be able to follow the course comfortably.	I strongly agree		I strongly disagree	n=119	mw=2,2	md=2,0	s=1,0
2.2) I prepare for the course and/or revise afterwards (e.g. by reading associated texts).	I strongly agree		I strongly disagree	n=119	mw=2,2	md=2,0	s=0,9
2.3) The course is well organised.	I strongly agree		I strongly disagree	n=118	mw=1,6	md=1,0	s=0,8
2.4) I learn a lot from the presentations and contributions made by other course participants.	I strongly agree		I strongly disagree	n=118	mw=2,4	md=2,0	s=1,0
2.5) I do a large amount of work in comparison with other courses.	much too low		much too high	n=118	mw=3,1	md=3,0	s=0,7
2.6) Debates are well managed (contributions are encouraged and responded to, talkative students are stopped).	I strongly agree		I strongly disagree	n=119	mw=1,8	md=2,0	s=0,9
2.7) I contribute to discussions.	never		often	n=118	mw=3,1	md=3,0	s=1,2
2.8) There are adequate opportunities for debates.	I strongly agree		I strongly disagree	n=116	mw=1,7	md=1,0	s=1,0
2.9) I received enough assistance (oral explanations or written instructions) when working on my partial achievements.	I strongly agree		I strongly disagree	n=118	mw=1,9	md=2,0	s=0,9
2.10) The lecturer provides helpful feedback on the students' contributions and questions.	I strongly agree		I strongly disagree	n=119	mw=1,4	md=1,0	s=0,7
2.12) The feedback from the lecturer on my contributions was constructive and helpful.	I strongly agree		I strongly disagree	n=117	mw=2,0	md=2,0	s=0,9
2.13) The course stimulates my interest in my studies.	I strongly agree		I strongly disagree	n=119	mw=1,8	md=2,0	s=0,9
2.14) The course motivates me to follow up on the course contents.	I strongly agree		I strongly disagree	n=119	mw=1,9	md=2,0	s=0,9
2.15) The course helps me to carry out my own research.	I strongly agree		I strongly disagree	n=68	mw=2,1	md=2,0	s=1,0
2.16) The debates yield important points for my research.	I strongly agree		I strongly disagree	n=66	mw=2,4	md=2,0	s=1,2
2.17) The lecturer encourages a more in-depth examination of the research among all course participants.	I strongly agree		I strongly disagree	n=66	mw=2,0	md=2,0	s=0,9