



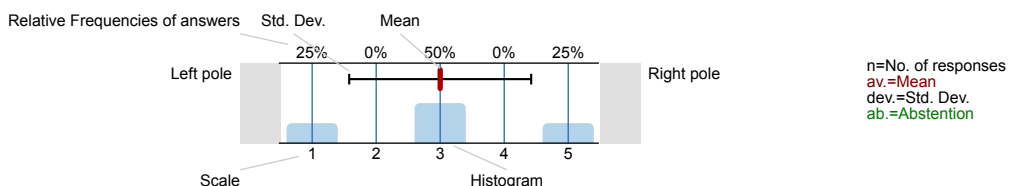
SPL040-FB1-22S

No. of responses = 116

Survey Results

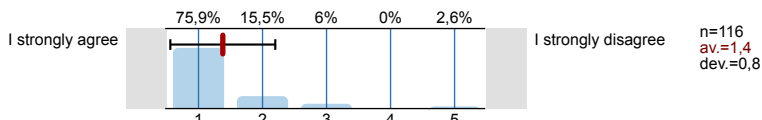
Legend

Question text

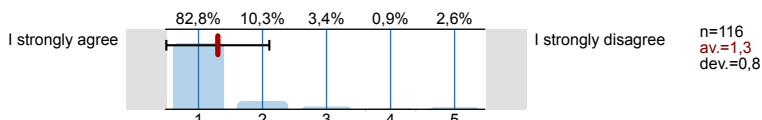


1. University wide section

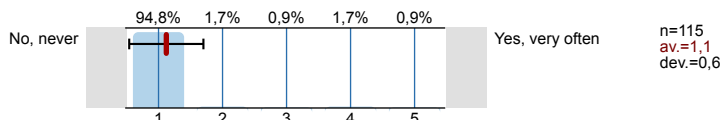
1.1) At the beginning of the course the learning outcomes, content and assessment criteria were clearly communicated.



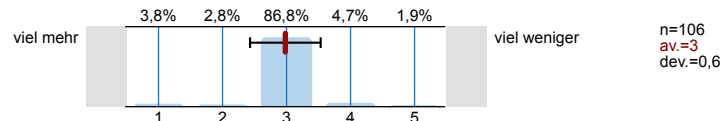
1.2) The lecturer was motivating.



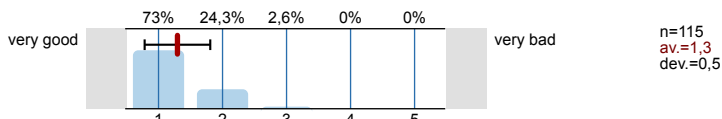
1.3) Were there situations in the course in which you experienced any kind of discriminatory behaviour? (For example, on the basis of gender, ethnicity, religion, age or sexual orientation)



1.5) Zur Absolvierung dieser Lehrveranstaltung ist ein Arbeitsaufwand von X Stunden (ECTS) vorgesehen. Ihrer Einschätzung nach: Werden Sie mehr oder weniger Stunden für die Absolvierung dieser Lehrveranstaltung aufwenden?

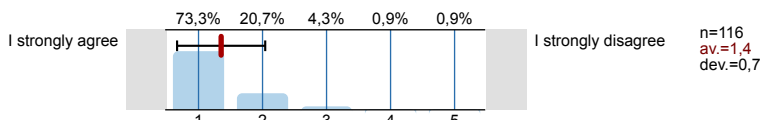


1.8) Overall, I would rate the course as

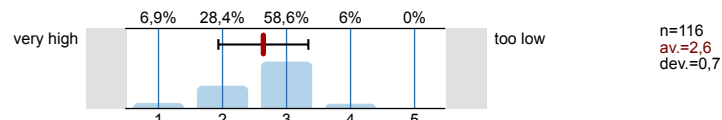


2. Questions from the director of studies

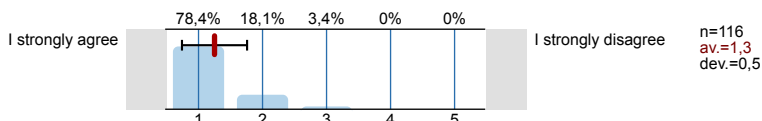
2.1) The course is well-organised.

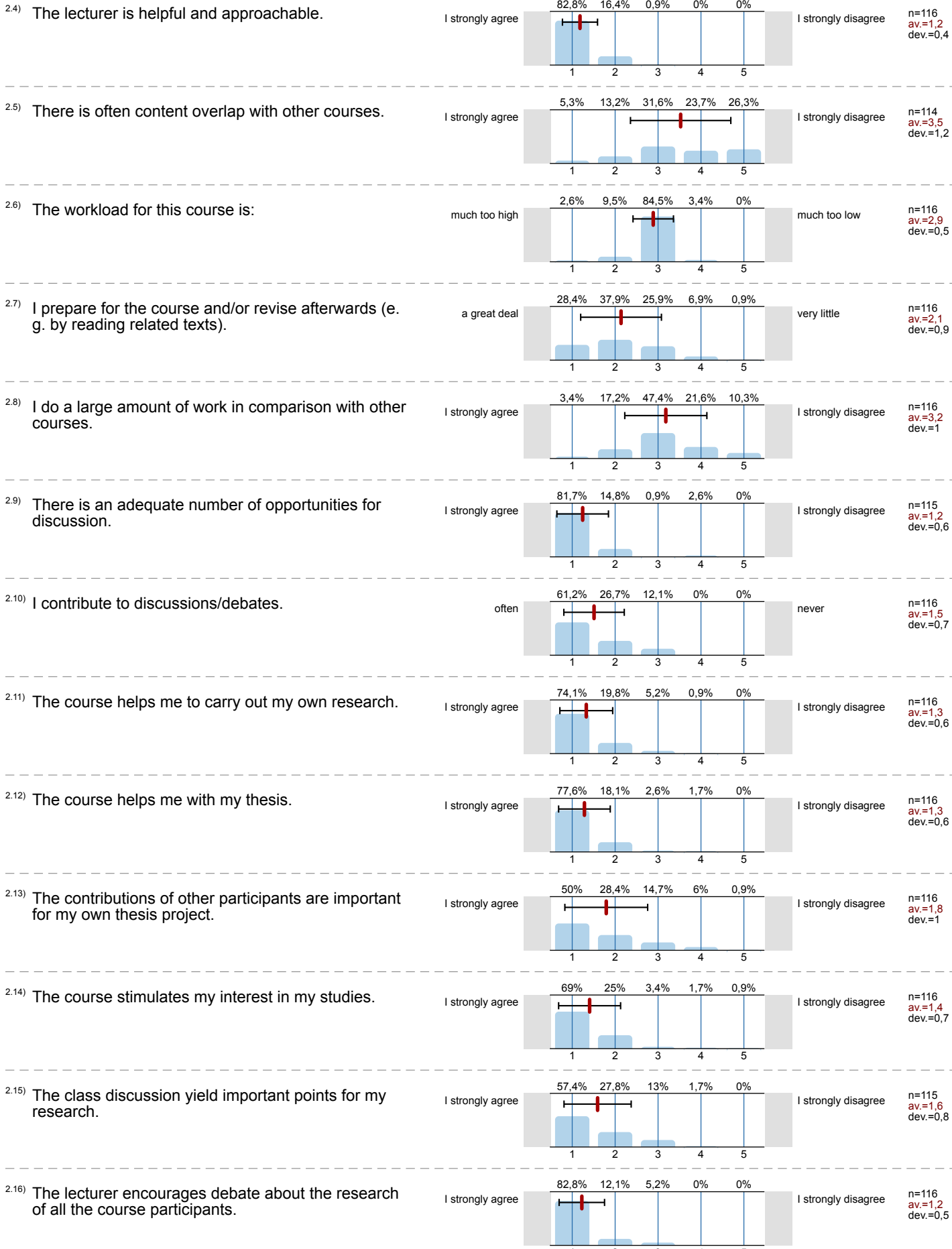


2.2) The level of prior knowledge needed to follow the course is:



2.3) The course encourages me to think for myself and carefully consider the topic and subject matter.





Profile

Compilation: SPL040-FB1-22S

Values used in the profile line: Mean

1. University wide section

1.1)	At the beginning of the course the learning outcomes, content and assessment criteria were clearly communicated.	I strongly agree		I strongly disagree	n=116	av.=1,4	md=1,0	dev.=0,8
1.2)	The lecturer was motivating.	I strongly agree		I strongly disagree	n=116	av.=1,3	md=1,0	dev.=0,8
1.3)	Were there situations in the course in which you experienced any kind of discriminatory behaviour? (For example, on the basis of	No, never		Yes, very often	n=115	av.=1,1	md=1,0	dev.=0,6
1.5)	Zur Absolvierung dieser Lehrveranstaltung ist ein Arbeitsaufwand von Stunden (ECTS) vorgesehen. Ihrer Einschätzung nach: Werden	viel mehr		viel weniger	n=106	av.=3,0	md=3,0	dev.=0,6
1.8)	Overall, I would rate the course as	very good		very bad	n=115	av.=1,3	md=1,0	dev.=0,5

2. Questions from the director of studies

2.1)	The course is well-organised.	I strongly agree		I strongly disagree	n=116	av.=1,4	md=1,0	dev.=0,7
2.2)	The level of prior knowledge needed to follow the course is:	very high		too low	n=116	av.=2,6	md=3,0	dev.=0,7
2.3)	The course encourages me to think for myself and carefully consider the topic and subject matter.	I strongly agree		I strongly disagree	n=116	av.=1,3	md=1,0	dev.=0,5
2.4)	The lecturer is helpful and approachable.	I strongly agree		I strongly disagree	n=116	av.=1,2	md=1,0	dev.=0,4
2.5)	There is often content overlap with other courses.	I strongly agree		I strongly disagree	n=114	av.=3,5	md=3,5	dev.=1,2
2.6)	The workload for this course is:	much too high		much too low	n=116	av.=2,9	md=3,0	dev.=0,5
2.7)	I prepare for the course and/or revise afterwards (e.g. by reading related texts).	a great deal		very little	n=116	av.=2,1	md=2,0	dev.=0,9
2.8)	I do a large amount of work in comparison with other courses.	I strongly agree		I strongly disagree	n=116	av.=3,2	md=3,0	dev.=1,0
2.9)	There is an adequate number of opportunities for discussion.	I strongly agree		I strongly disagree	n=115	av.=1,2	md=1,0	dev.=0,6
2.10)	I contribute to discussions/debates.	often		never	n=116	av.=1,5	md=1,0	dev.=0,7
2.11)	The course helps me to carry out my own research.	I strongly agree		I strongly disagree	n=116	av.=1,3	md=1,0	dev.=0,6
2.12)	The course helps me with my thesis.	I strongly agree		I strongly disagree	n=116	av.=1,3	md=1,0	dev.=0,6
2.13)	The contributions of other participants are important for my own thesis project.	I strongly agree		I strongly disagree	n=116	av.=1,8	md=1,5	dev.=1,0
2.14)	The course stimulates my interest in my studies.	I strongly agree		I strongly disagree	n=116	av.=1,4	md=1,0	dev.=0,7
2.15)	The class discussion yield important points for my research.	I strongly agree		I strongly disagree	n=115	av.=1,6	md=1,0	dev.=0,8
2.16)	The lecturer encourages debate about the research of all the course participants.	I strongly agree		I strongly disagree	n=116	av.=1,2	md=1,0	dev.=0,5